

REF.:6134

# Newly built semi-detached house to buy in Aravell

España - Aravell

|                          |              |          |                  |
|--------------------------|--------------|----------|------------------|
| Superficie               | Habitaciones | Baños    | Precio           |
| <b>176 m<sup>2</sup></b> | <b>3</b>     | <b>2</b> | <b>560.000 €</b> |

Contáctenos para recibir más información o solicitar una visita

+376 872 222

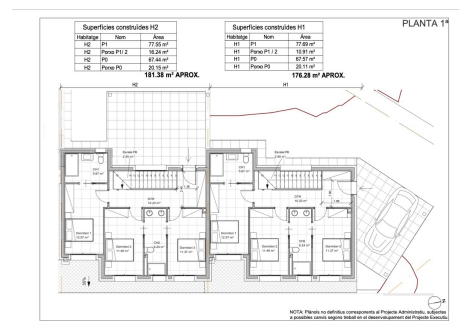
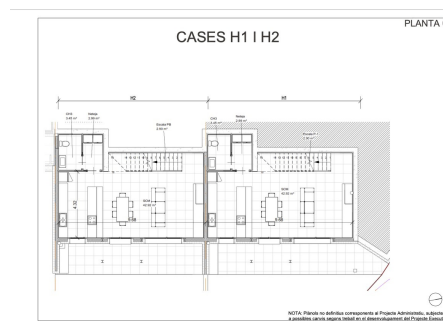
info@sir.ad



NOTA: Renders no definitius corresponents al Projecte Administratiu, sul a possibles canvis segons treball en el desenvolupament del Projecte Ex



NOTA: Renders no definitius corresponents al Projecte Administratiu, sul a possibles canvis segons treball en el desenvolupament del Projecte Ex



REF.:6134

# Newly built semi-detached house to buy in Aravell

España - Aravell

|                          |              |          |                  |
|--------------------------|--------------|----------|------------------|
| Superficie               | Habitaciones | Baños    | Precio           |
| <b>176 m<sup>2</sup></b> | <b>3</b>     | <b>2</b> | <b>560.000 €</b> |

Contáctenos para recibir más información o solicitar una visita

 +376 872 222

 info@sir.ad

Discover the perfect combination of comfort and nature in these exclusive townhouses located in Aravell, right in front of the beautiful golf course. With a constructed area of approximately 170 m<sup>2</sup>, these homes offer a modern and functional design, ideal for enjoying a relaxed lifestyle. Each house has a large private garden of around 200 m<sup>2</sup>, an ideal space to enjoy pleasant moments outdoors, organize family gatherings or simply relax in natural surroundings. The brightness and the open layout of the interior create a welcoming and versatile environment, perfect to adapt to your needs. In addition, each home includes a covered parking lot, offering the convenience you deserve to protect your vehicle from inclement weather. Located in a privileged location, these terraced houses are ideal both for permanent residents and for those looking for a holiday retreat in a quiet and spectacular environment.

## Características

- ✓ Aire condicionat
- ✓ Jardí
- ✓ Parking cobert
- ✓ Armaris encastrats
- ✓ Calefacció
- ✓ Vistes a la muntanya
- ✓ Camp de golf
- ✓ Assolellat
- ✓ Parking
- ✓ Zona verda
- ✓ Doble vidre
- ✓ Aigua calenta

REF.:6134

# Newly built semi-detached house to buy in Aravell

España - Aravell

| Superficie               | Habitaciones | Baños    | Precio           |
|--------------------------|--------------|----------|------------------|
| <b>176 m<sup>2</sup></b> | <b>3</b>     | <b>2</b> | <b>560.000 €</b> |

Contáctenos para recibir más información o solicitar una visita

 +376 872 222

 [info@sir.ad](mailto:info@sir.ad)

Sotheby's International Realty® is a registered trademark licensed to Sotheby's International Realty Affiliates LLC. Each Sotheby's International Realty® office is independently owned and operated.